

Fitness Center Precedent Project

Joshua Rabich
Fall 2025
ARC 486 Design V
Professor LoPiccolo

Harudot Cafe, Thailand

Location: Thailand

Year completed: June 2023

Architect: IDIN Architects

Square footage: 5,112 sf

Total Budget: Approx. \$300K

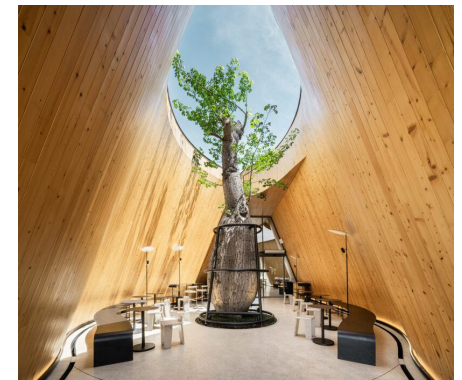
Price per square foot: \$58



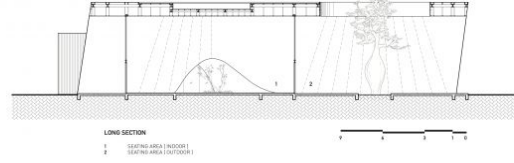
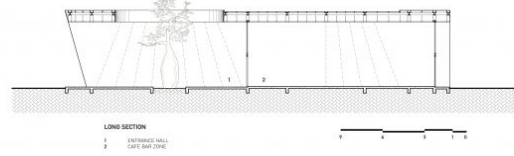
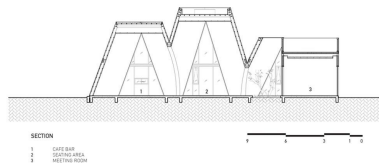
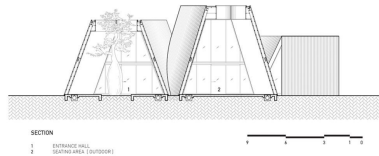
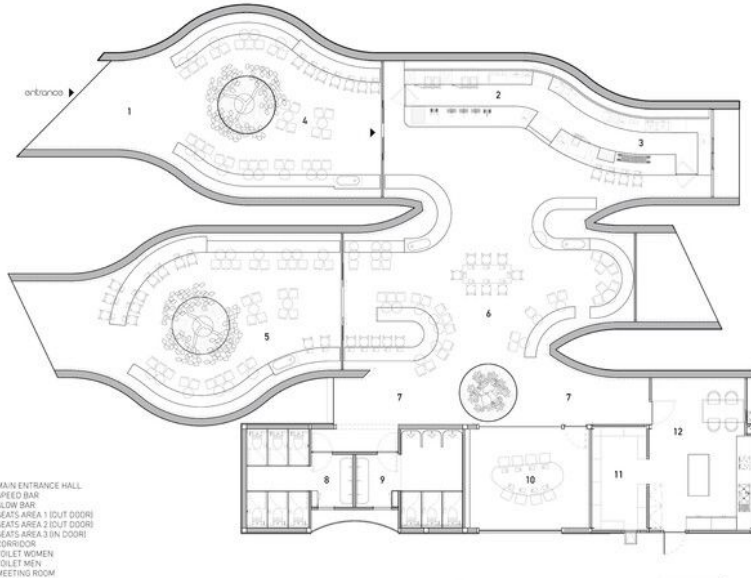
Materials



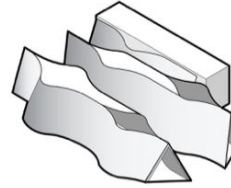
“The design incorporates three simple, black gable forms that exude a humble yet sophisticated aesthetic, influenced by Japanese culture. In contrast, the interior features warm pine wood walls, creating a cozy and inviting atmosphere. The transition from the exterior to the interior is a journey in itself, with spaces that morph and bend, leading visitors deeper into the café and unveiling new experiences at every turn.”



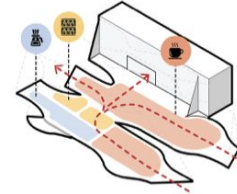
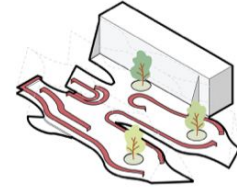
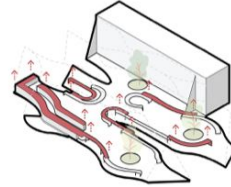
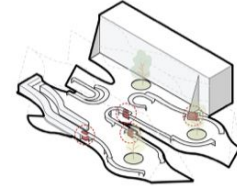
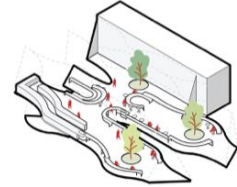
Floor Plans



3D Diagrams



INSPIRED BY THE AESTHETIC OF ARCHITECTURE

ANALYZING INTERIOR PROGRAMMING
TO CREATE APPROPRIATE ZONE AND CIRCULATIONSFORM FOLLOWS FUNCTION
ACCORDING TO THE CIRCULATIONS AND
WALL LINES LEAD TO RIBBON LIKE FURNITURELEVITATING THE RIBBON PLANES IN DIFFERENT LEVELS
TO CREATE MORE DYNAMIC AND VOLUMINIOUSIN THE INTERSECT SPOT OF 2 LEVELS STAND
A SERVICE STATION CABINETSET A PROPER TYPE OF FURNITURE IN EACH LEVEL OF RIBBON PLANE
FINALLY WE'LL HAVE CHAIRS, TABLES, BAR TABLES AND PRODUCT SHELVES

“Harudot is designed on a human scale, with smaller, distinct zones that serve various purposes. These include a bar, a coffee drinking area, a lounge, a meeting room, and restrooms. Each of these spaces is thoughtfully designed, with the gable roofs pulled apart in places to create voids that allow sunlight and rain to enter, maintaining a strong connection with the natural environment. These voids also introduce curved forms that add a sense of movement to the structure.”

Deep Dive Rowing Club, Pudong China

Location: Pudong China

Year completed: 2017

Architect: Scenic Architecture Office

Square footage: 3,200 sf

Total Budget: Unknown

Price per square foot: Unknown

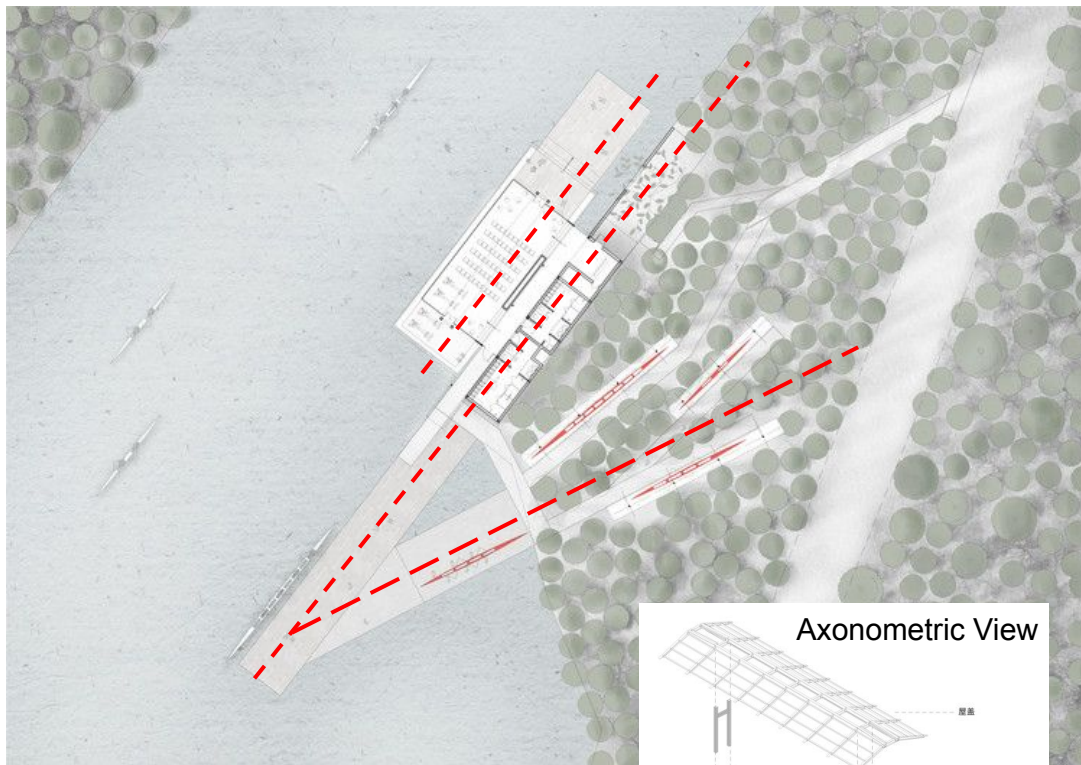


“Century Park is the largest wetland park open to the public in downtown [Shanghai](#). The Zhangjiabang River, which can be partially used for rowing training, is an urban river that crosses the park in a rough width of 35m. Rowing athletes face the opposite direction of advancing when paddling. Due to the considerations of safety and speed change, we set up the club at the bend point of the river with a cove to facilitate two-way departures and arrivals.”



Materials

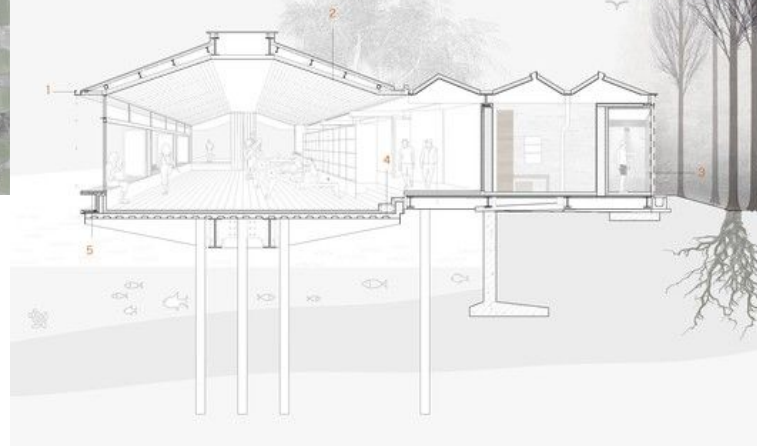




Site Plan

Section View

- 15x100 Stainless steel channel bar
φ40 Stainless steel drip pipe
- 0.7mm Titanium Zinc Plate
6mm Air vapour barrier
1.5mm Viscous polymeric waterproofing membrane
20mm Timber decking
Polypropylene Waterproof breathable membrane
50mm Keel, filled foam glass insulation board
Modified Asphalt Vapor Layer
Steel beam
Aluminum ceiling
- 30mm High quality preservative wood
20mm 1: 2.5 Polymer Cement mortar protection layer
1.5mm Polyurethane waterproof Layer
20mm 1: 3 Polymer cement mortar for slope
- 0.2mm Polyurethane Paint
20mm Hard wood decking
50x50 Galvanized steel square pipe@400
20mm Polymer cement mortar for slope
Cement (mix with structural glue)
Pressure-type steel plate
- 15mm High quality preservative wood
40mmx40mm Timber keel@400, brush preservatives and fire retardant coatings
6mm Crack resistant Mortar
Keel with damp proof membrane
20mm 1: 3 Polymer cement mortar for slope
Cement (mix with structural glue)
Concert wall



Humboldt Fitness Center, Kansas

Location: Humboldt, Kansas

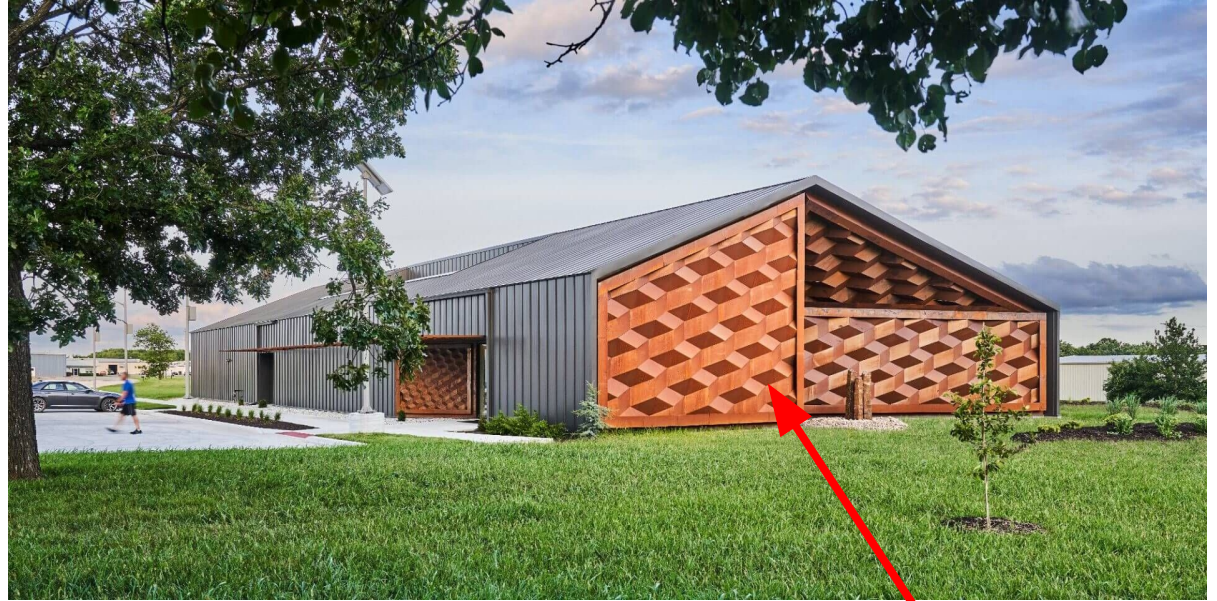
Year completed: 2019

Architect: Hufft

Square footage: 10,000sf

Total Budget: Unknown

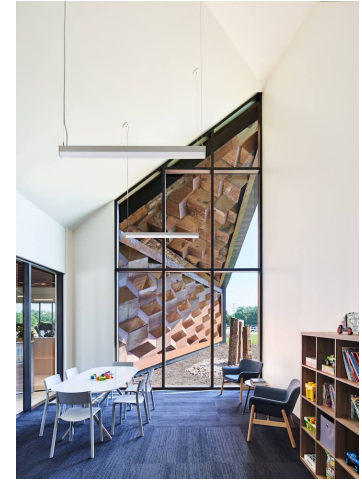
Price per square foot: Unknown



The Band

The company branding directly influences the design of their fitness center. The triangular shapes of the copper panels can be seen directly into their logo design and distinguishes them from other competitors

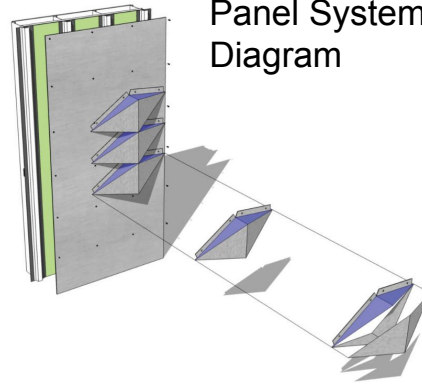
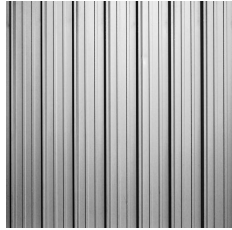
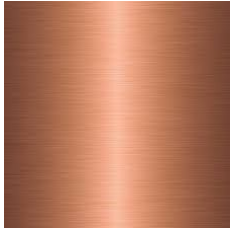




The shape of the panels on each end of the building help shape a clear entrance way within the architecture itself and the various angles of copper panels play with the natural light to bolden this effect

The agrarian-inspired building's bold and modern metal work commands attention from every direction. Diamond-shaped panels, fabricated by B&W, cover the east and facades. Custom canopies sweeping across the north and south ends were cut by B&W's industrial tube laser.

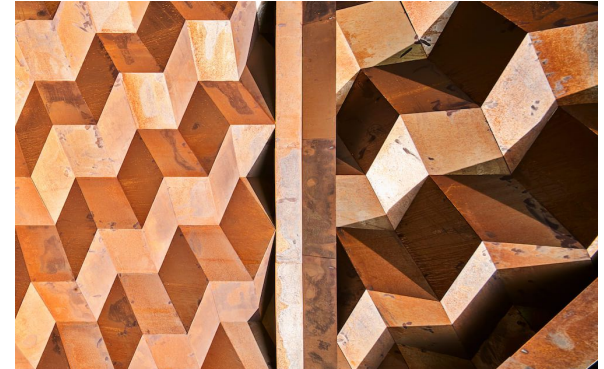
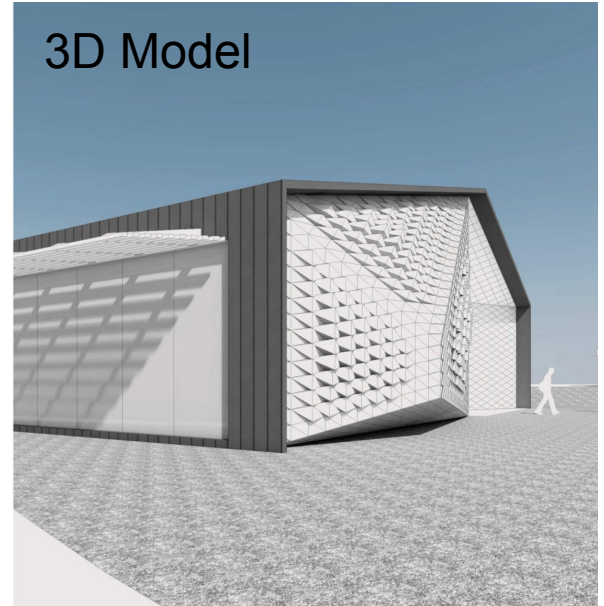
Materials



Panel System
Diagram

The geometric facade is the hero of the building's design. The architectural team's process for this specific element began with planning the form, pattern and application of the diamond panels.

3D Model



CITATIONS:

<https://www.sportsmanagement.co.uk/Sports-news/latest/Hufft-create-industrial-fitness-centre-with-refined-design-touches/343822>

<https://www.archdaily.com/1012431/harudot-by-nana-coffee-roasters-idin-architects>

<https://www.archdaily.com/898043/deep-dive-rowing-club-scenic-architecture-office>

<https://hufft.com/humboldt-fitness-center-industrial-strength/>